



A SMARTER WAY TO P25™

ES Radio System Access Issues on P25 Trunking Systems

Implementation notes

Date Issued: 5/29/13

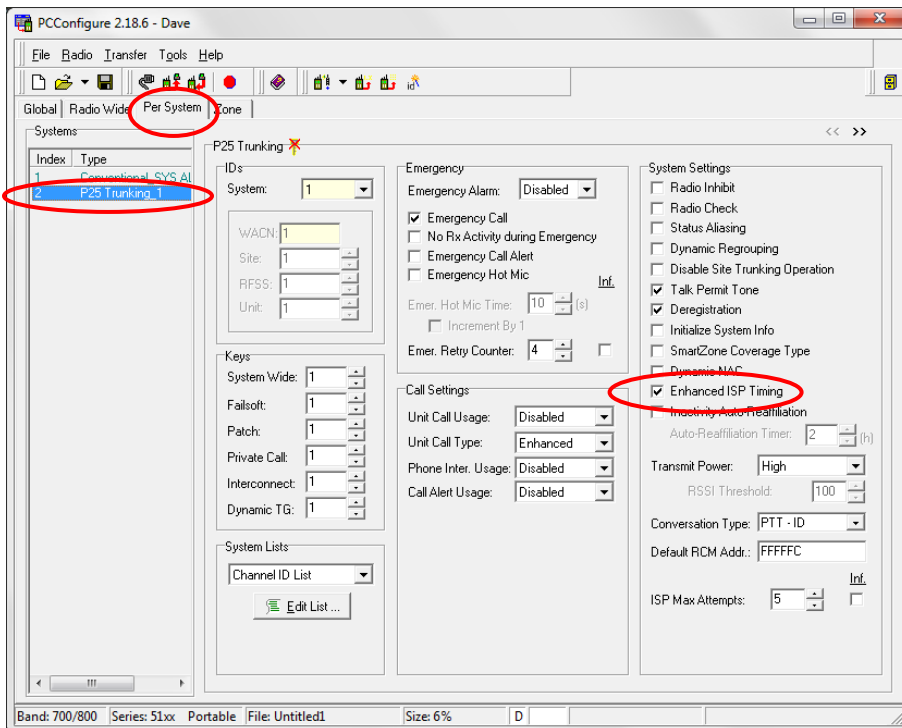
FSB-0513-ESACCS-02

Affected Products: 5100ES / 5300ES Radios with Software Versions 6.12.x or Higher

Symptom(s): Radios with the Enhanced ISP Timing option enabled may experience an increased number of system access retries on legacy P25 Trunking systems.

Cause: In the 6.12.x version of firmware, an Enhanced ISP option was added to the P25 Trunking system settings. It was added in the 09.2 Software Release and is needed to pass CAP testing.

Resolution: Disable or uncheck the Enhanced ISP Timing option found in the P25 Trunking Per System folder.



For questions regarding this Field Service Bulletin, please contact EJohnson at 1.800.328.3911, option 3